

# NARNU FARM

## *Camp Booklet*



Name.....

School.....

Teacher's Name.....

## Welcome To Narnu Farm!

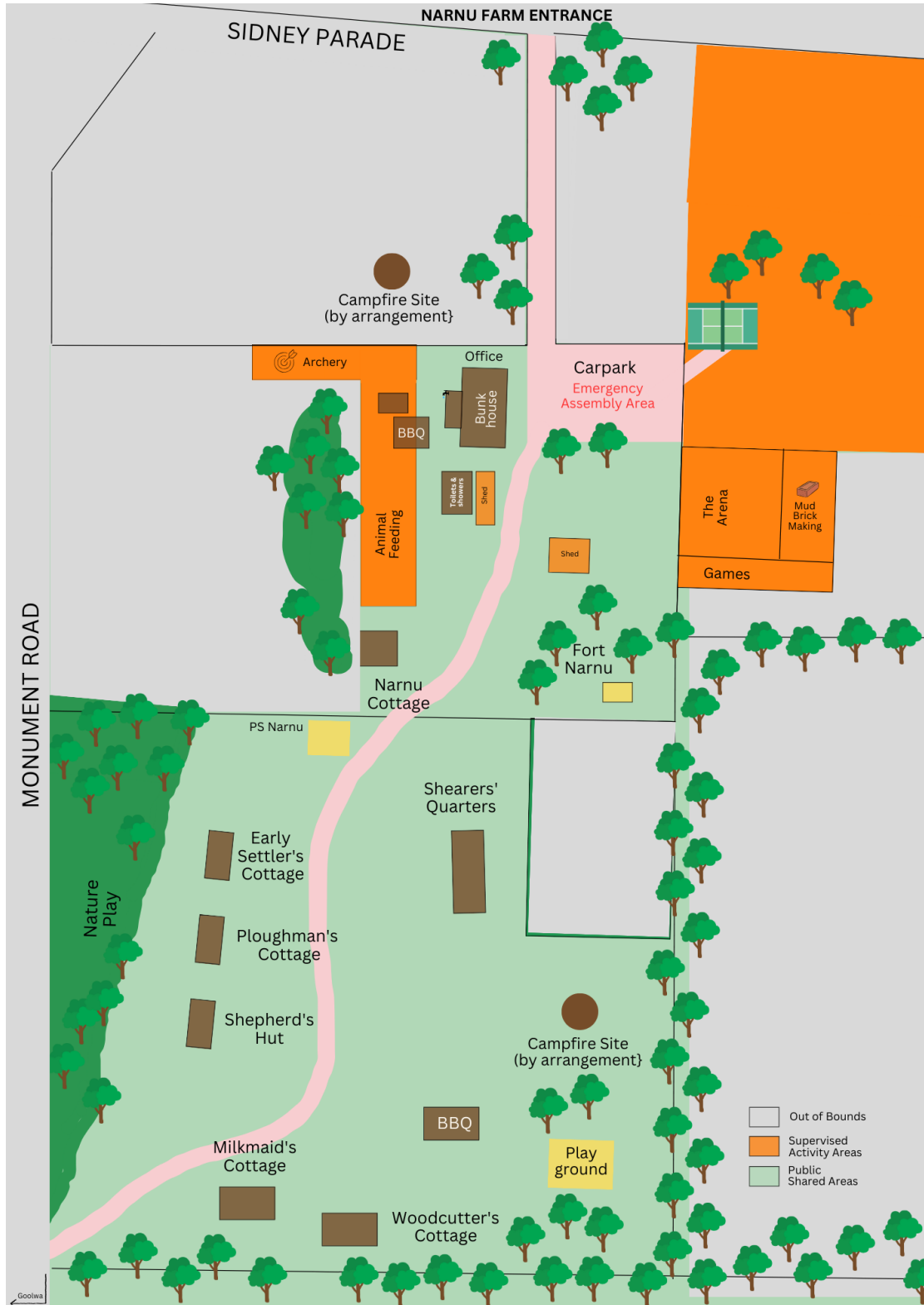
We are super excited to have you here at camp!  
We hope you have as much fun as we do.

Take this booklet with you throughout camp, there are  
lots of activities to do!

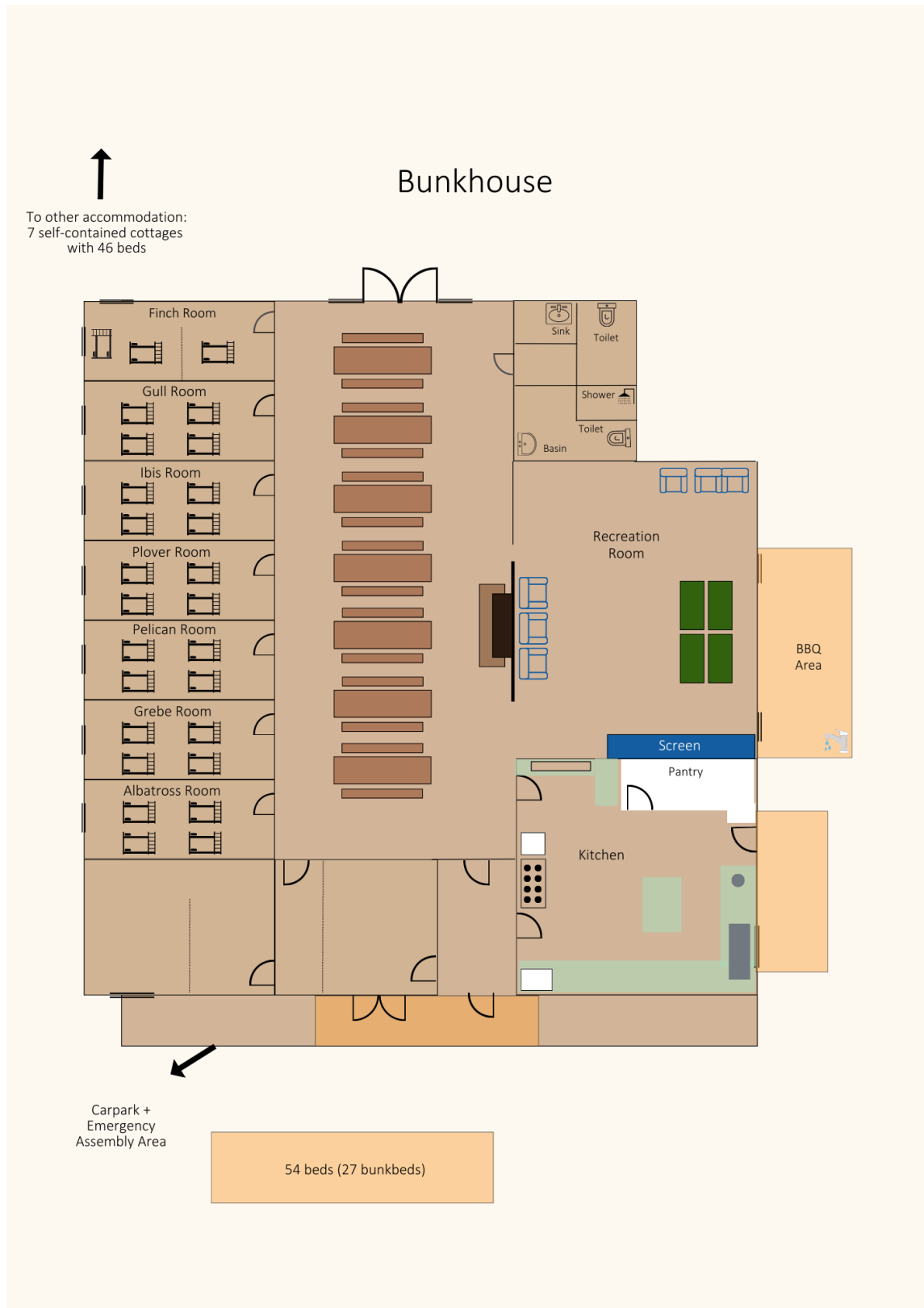
Our friendly cats, Leo and Snoopy say hello to you too.  
As well as our Emu, Ollie, his goat and deer friends, and  
of course Michael and Angelo, our pigs!

We cannot wait to hear about all of the  
fun adventures you have!

# Camp Site Map

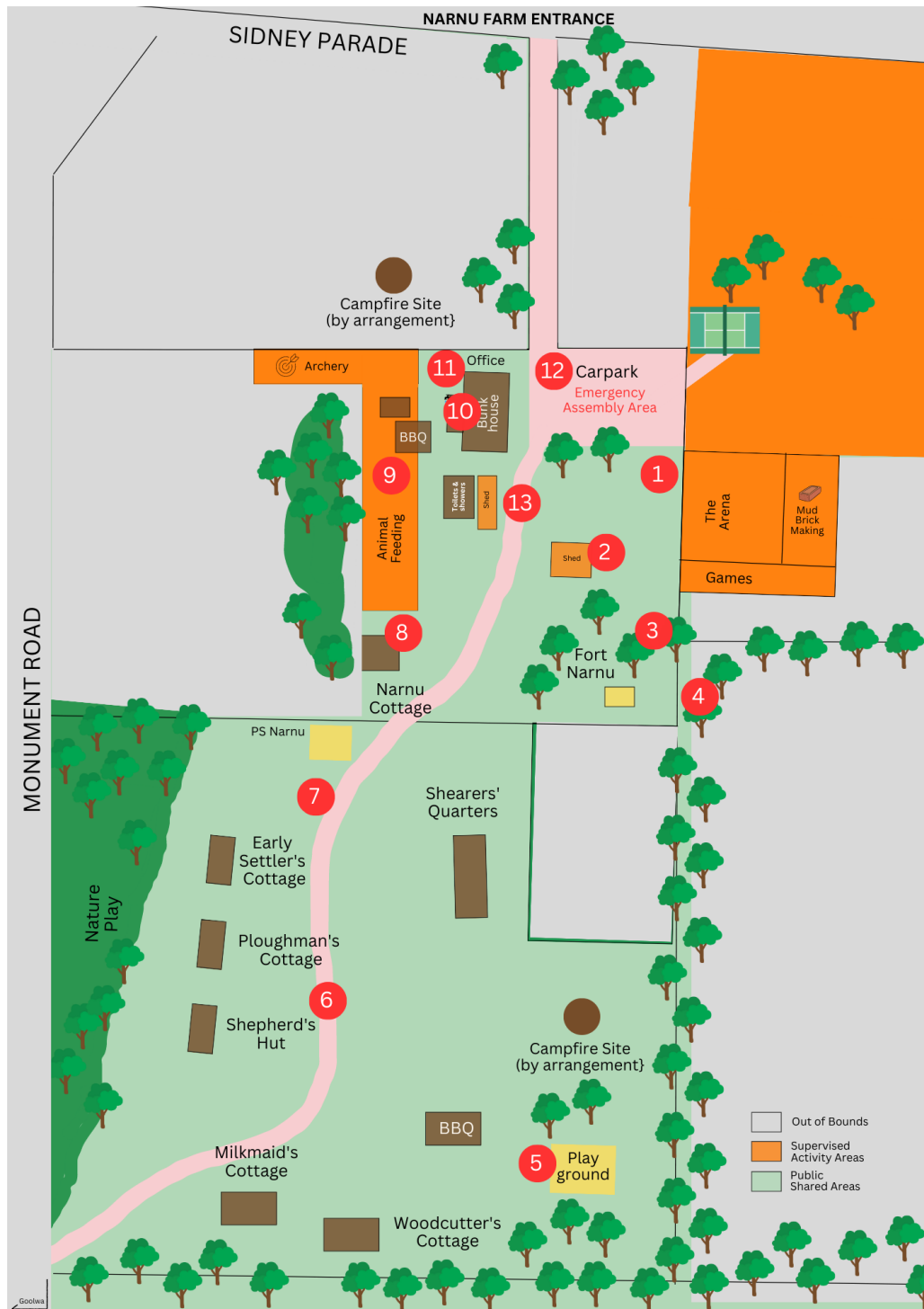


# Bunkhouse Layout



# Scavenger Hunt

Here you will embark on a journey around the farm. Find your answers by following the numbers on the map! The first team to return with all of the correct answers wins and receives a prize!



1. What sport do you play here?	2. What is the label on the cow inside here?	3. What do we need to survive and grow?
4. What is the name of the fort? What are you not allowed to climb on?		5. How many handles on the steering wheel?
6. How many wooden stepping stones are here?	7. How many cottages can you see? What are the cottages called?	
8. What is this cottage called and when was it established?	9. What has 6 toes and 2 legs?	10. What are the 3 Rs of waste management?
11. What year was the shearing shed established? (look up).	12. What animal is on top of here?	13. What are the three areas here?
Something that starts with 'C'	Something made of wood.	Something that makes me feel happy.

## Farm History Trail

Welcome to our farm history trail! Here, you'll embark on a journey through time, tracing the footsteps of the pioneers who settled this land and the generations who followed.

Along the way, you'll encounter historic buildings and artefacts that tell the story of past farmers. From the old homestead and barns to the antique tools and equipment, these treasures provide a glimpse into the daily life of our farming ancestors.



- |                       |                      |
|-----------------------|----------------------|
| 1. Office             | 7. Hay Baler         |
| 2. Bunkhouse          | 8. Hay Rake          |
| 3. Bullock Dray       | 9. Stump Jump Plough |
| 4. Single Horse Wagon | 10. Tip Truck Wagon  |
| 5. 4 Wheel Wagon      | 11. Cultivators      |
| 6. Stone Rake         |                      |



## Stop 1

Find these items at stop 1 and draw a line to their matching name:



Farrier Tool

Old Milk Container

Old Wooden Trough

Washing Wringer

Hand Plough

## Stop 2

Look up!

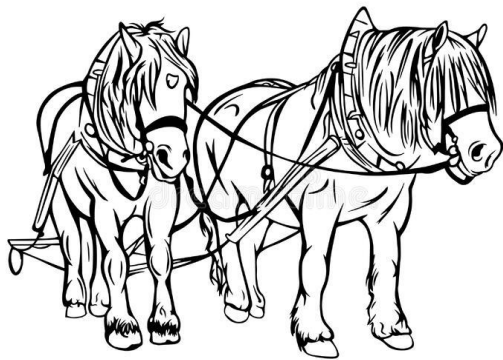
Can you find the year that the old stone part of the bunkhouse was established?



### Stop 3

What did they transport using this wagon?

Why did they use bullocks instead of horses?



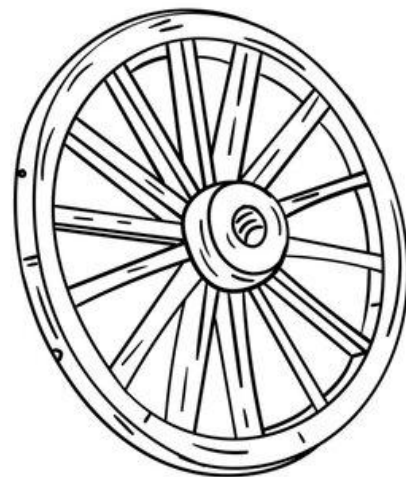
### Stop 4

How many horses would have pulled this wagon?

What are the wheel spokes made of?

Circle the correct answer:

- a) Steel
- b) Wood
- c) Plastic



What is the axle made out of?

Circle the correct answer:

- a) Steel
- b) Wood
- c) Plastic

## Stop 5

How many horses would have pulled this wagon?

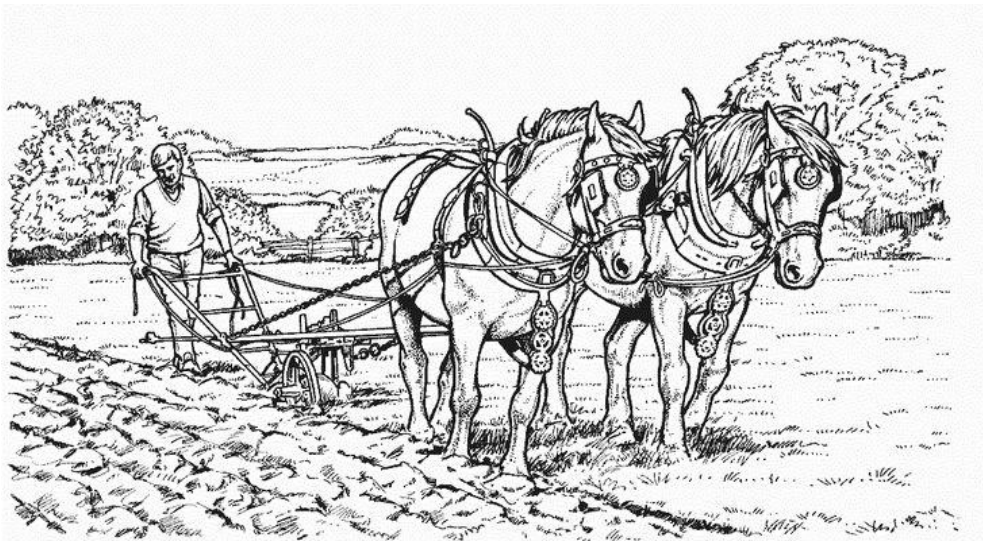
Circle the correct answer:

- a) None
- b) 1
- c) 2-4

What are the axles on this wagon made of?

Circle the correct answer:

- a) Steel
- b) Wood
- c) Plastic



Do you think this wagon is more modern than the previous Single Horse Drawn Wagon? Why?

## Stop 6

Where does the farmer sit while using the stone rake?  
Draw a circle where you think.



Do you think this machine would be very useful at Narnu Farm?  
Why or why not?



## Stop 7

What is a bale of hay bound with?

When did tractors begin to replace horses on farms?

Why did they start using tractors instead of other draft animals?

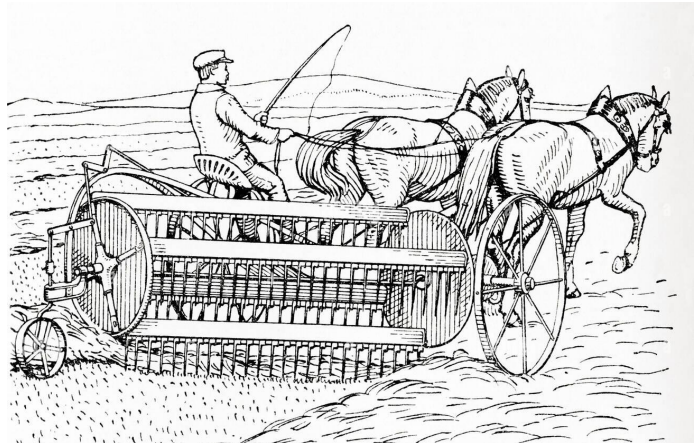
## Stop 8

Unlike the wagons, what are the wheel spokes on this machine made of?

Circle the correct answer:

- a) Steel
- b) Wood
- c) Plastic

Do you think this machine is more modern than the tractor drawn hay baler?  
Why or why not?



## Stop 9

What is missing on this machine?

Circle the correct answer:

- a) A Wheel
- b) A Seat
- c) The Lever

What are the blades on this machine called?

What is one of the things the stump-jump-plough jumped?

Where was this machine mainly used?

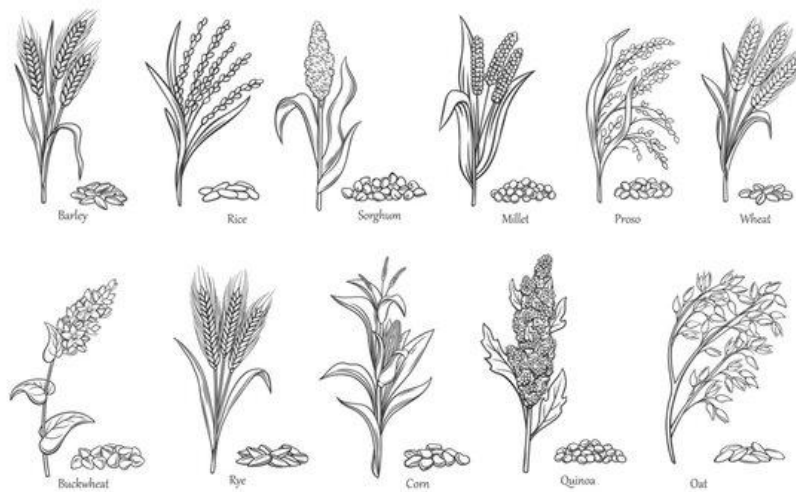
## Stop 10

What does the lever on the wagon allow it to do?

## Stop 11

What do these cultivators and the stump-jump-plough have in common?

What crops was this machine mostly used for?

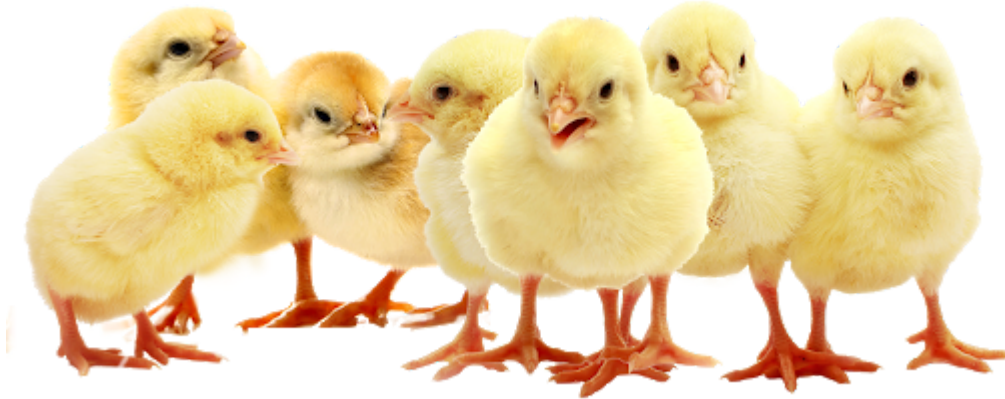


**Congratulations!**

*You have completed the Farm History Trail!*



## Baby Chicks Worksheet



It is important that fertile eggs are in a similar environment to which the mother hen provides.

1. What 3 things does the egg incubator do to create this environment?

a. \_\_\_\_\_

b. \_\_\_\_\_

c. \_\_\_\_\_

2. How many days does it take for an egg to hatch?

Circle the correct answer:

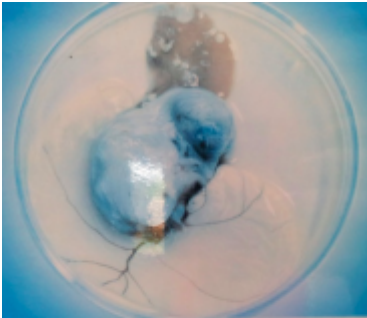
a. 15 days

b. 21 days

c. 26 days



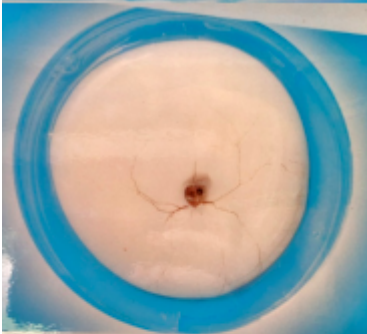
3. Draw a line and match the pictures below with the appropriate age of the egg:



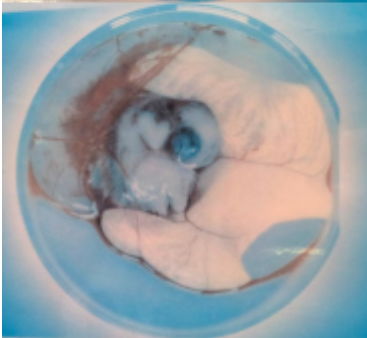
1 - 8 Days



9 - 13 Days



14 - 17 Days



18 - 20 Days

4. What 2 things are important to have available to baby chicks at all times?

a. \_\_\_\_\_

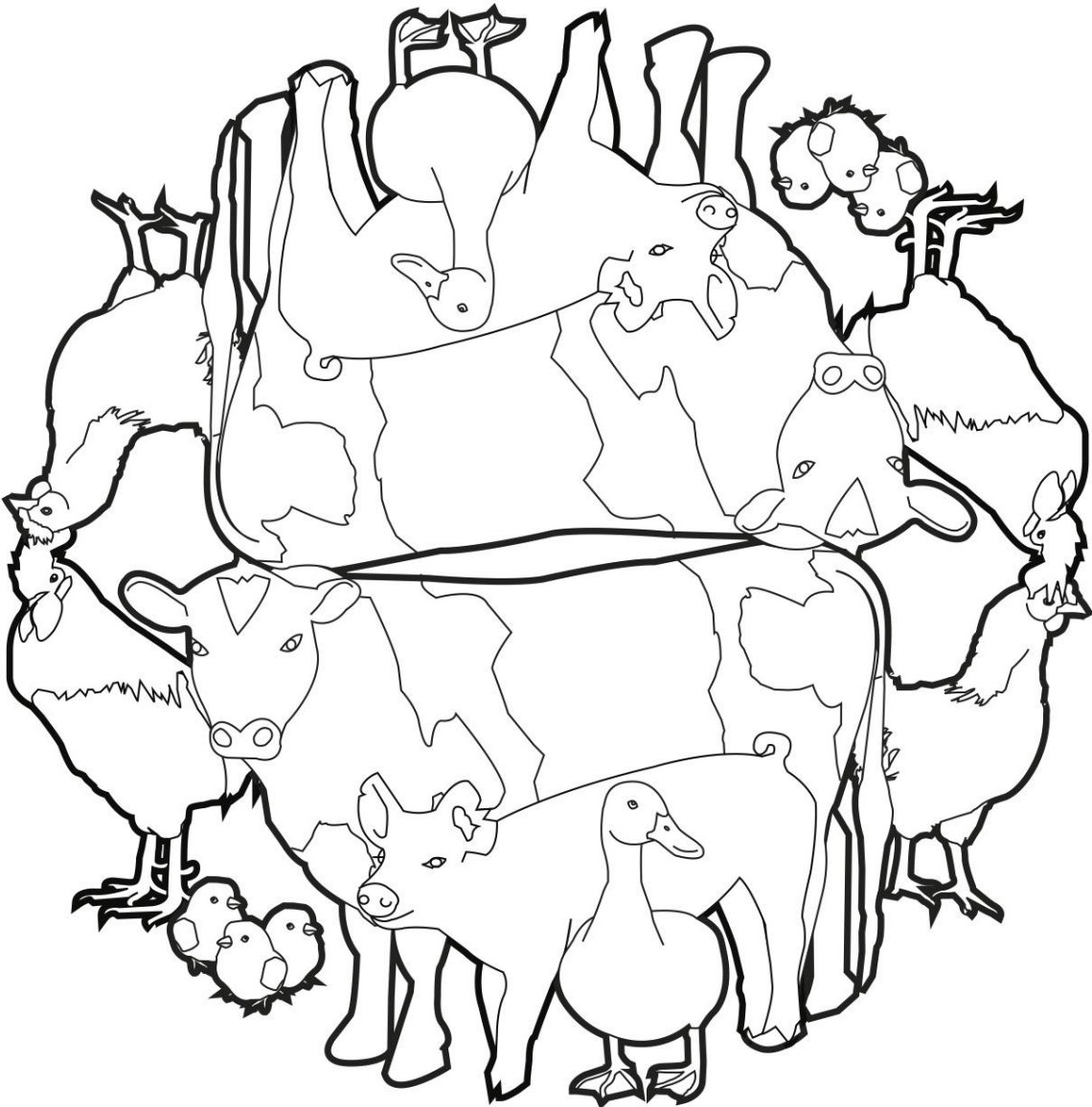
b. \_\_\_\_\_

5. What is the correct way that we should be holding a baby chicken?

- a. With two hands gently cupped underneath the chicken.
- b. With one hand cupped underneath the chicken and the other hand gently over the wings.
- c. With one hand holding onto the legs and the other hand free to pat the chick.



Colour me in



# Word Search

X B T W T K B U T T E R P Q Q  
 B A U S O A N G E L O G L D R  
 V L N N F A T Q X C P N Z E J  
 U U A I K A K O A Z H J U E U  
 I G G C M H R A Z M O W D R Q  
 R G Y W K A O Q X I R J L U I  
 C M U M I S L U R L S I P N I  
 A O O I I L M S S K E E A X F  
 M G W P N C D I A E S S C Y R  
 P I G S I E H E T P H H F Z I  
 F O I B N O A A R H O E D L E  
 I F L Q A O N P E N E E Z O N  
 R A R L W B O E I L E P C U D  
 E R W U I C G P E G E S L B S  
 A M T A D E O X Y R B O S B K

Blacksmith  
 Guinea Pig  
 Michael  
 Animals  
 Angelo  
 Sheep

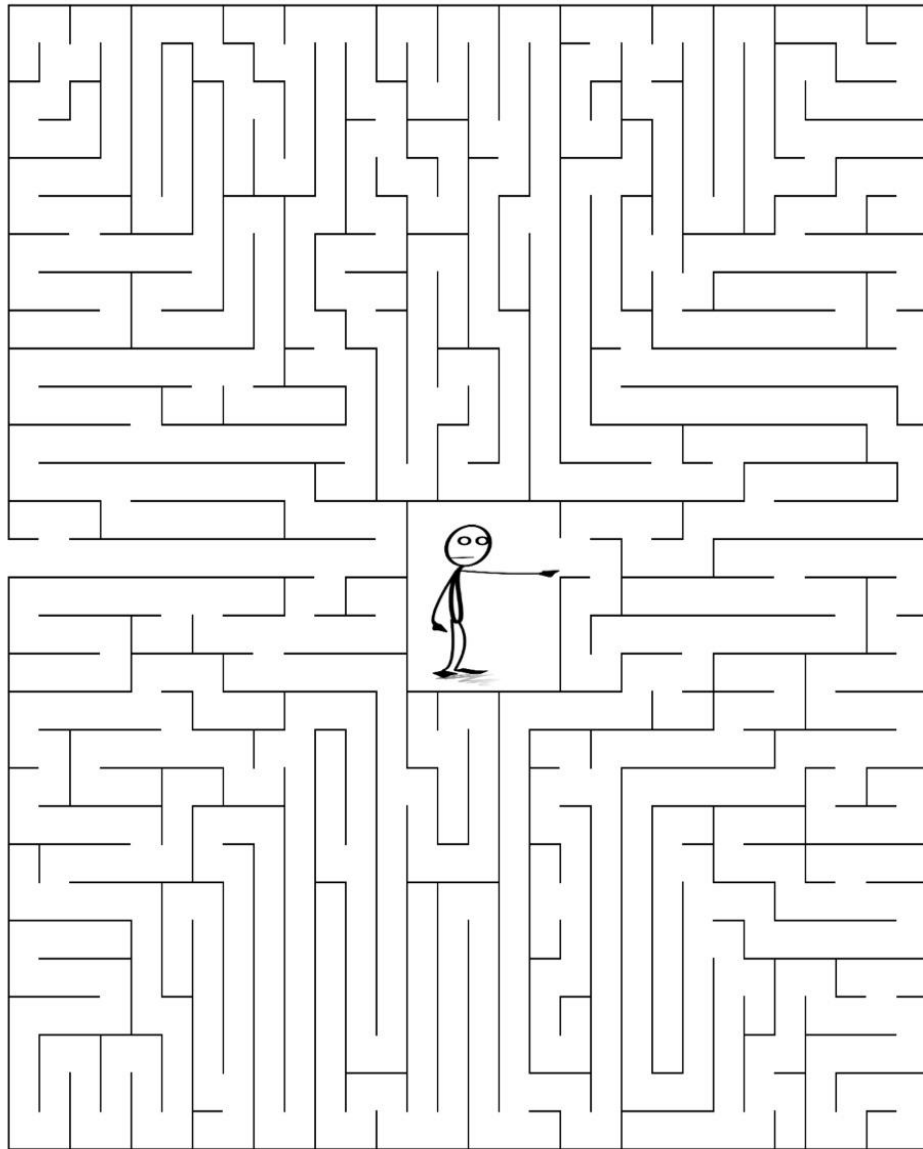
Wilderness  
 Campfire  
 Bunkhouse  
 Butter  
 Cows  
 Farm

Horseshoe  
 Friends  
 Pioneer  
 Snoopy  
 Deer

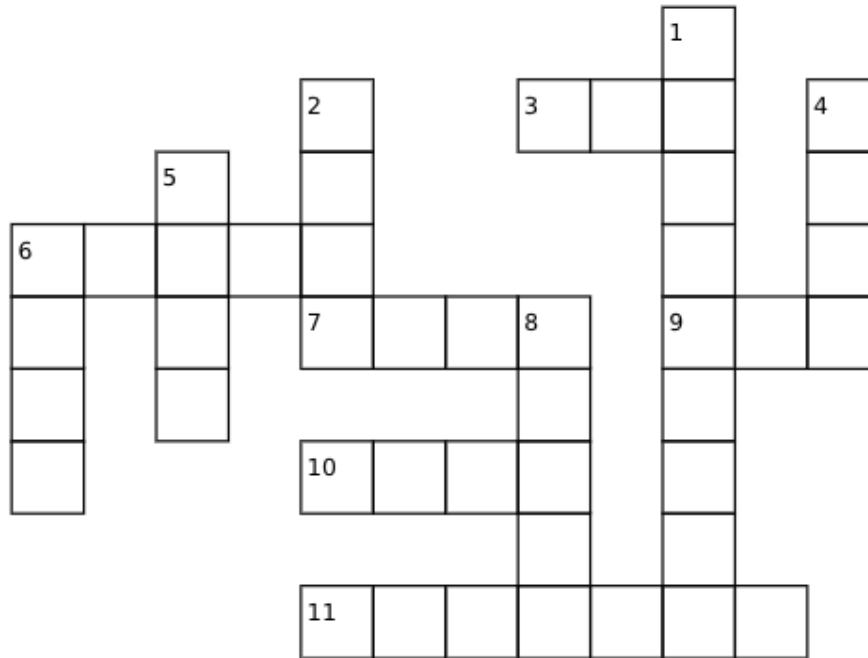
Ollie  
 Milk  
 Leo

# Maze Puzzle

Old McDonald is lost in the bunkhouse.  
Can you help him get out by solving the puzzle?



# Crossword Puzzle



**Down:**

1. The large building with bunk rooms and the dining room
2. Black coal used for the Blacksmith Fire
4. A shelter for farm animals
5. Michael and Angelo are
6. A baby cow
8. You would plant these if you were hand ploughing

**Across:**

3. An animal with 6 toes and 2 legs
6. A baby chicken
7. What you find in the chicken coop
9. She lays eggs
10. A large, tied bundle of straw
11. A male chicken



## Time To Reflect...

1. What part of camp did you enjoy the most?
2. What did you find the most challenging part of camp?
3. Did you do something you had never done before? What was it?
4. What did you learn at camp?

Take a moment to  
breathe and think  
of something that  
makes you happy.

# Notes

---

---

---

---

---

---

---

---

---

---

---

---

---

---

---

---

---

---

---

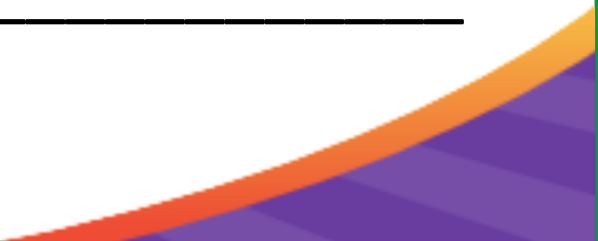
---

---

---

---

---



---

---

---

---

---

---

---

---

---

---

---

---

---

---

---

---

---

---

---

---

---

---

---

---

---

---



---

---

---

---

---

---

---

---

---

---

---

---

---

---

---

---

---

---

---

---

---

---

---

---

---