

NARNU FARM

Information Guide

Updated April 2024

Contents

Welcome	3
Narnu Farm Location	3
Main Camp Area	4
Room Configuration	5
What to Bring Guide	6
Departure Duties	7
Emergencies	8
Emergency Contacts	8
Bushfire Action Plan	9
Total Evacuation Plan	9
First Aid Policy	10
First Aid and Medical Checklist	11

Beyond the Classroom

We believe everybody should develop life skills through adventure experiences.

We help people to get outdoors so they can learn, grow and explore.

We deliver engaging adventure experiences that challenge, reward and inspire.

Welcome

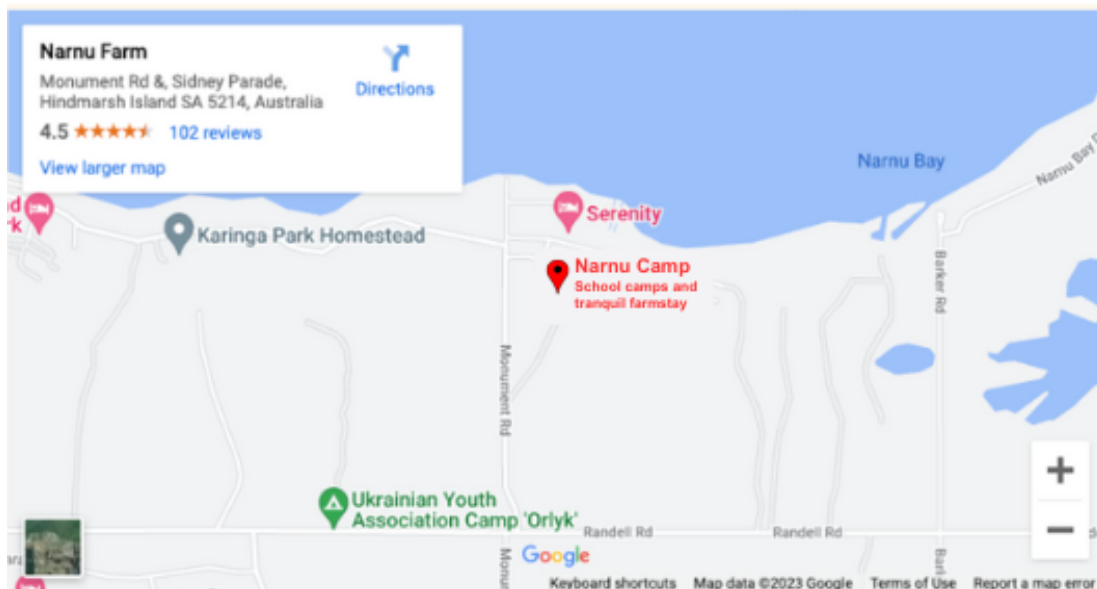
Narnu Farm is located on picturesque Hindmarsh Island overlooking the Murray River just minutes from the riverside town of Goolwa on the south coast of Fleurieu Peninsula in South Australia.

By road from the Adelaide CBD, the drive to Narnu Farm is just over an hour. Travel south from Adelaide to Goolwa and take the bridge over to Hindmarsh Island, continue along the main road (Randell Road) for 3km and follow the signs to Narnu Farm. Turn left onto Monument Road and take your next right turn onto Sidney Parade for the entrance to Narnu Farm.

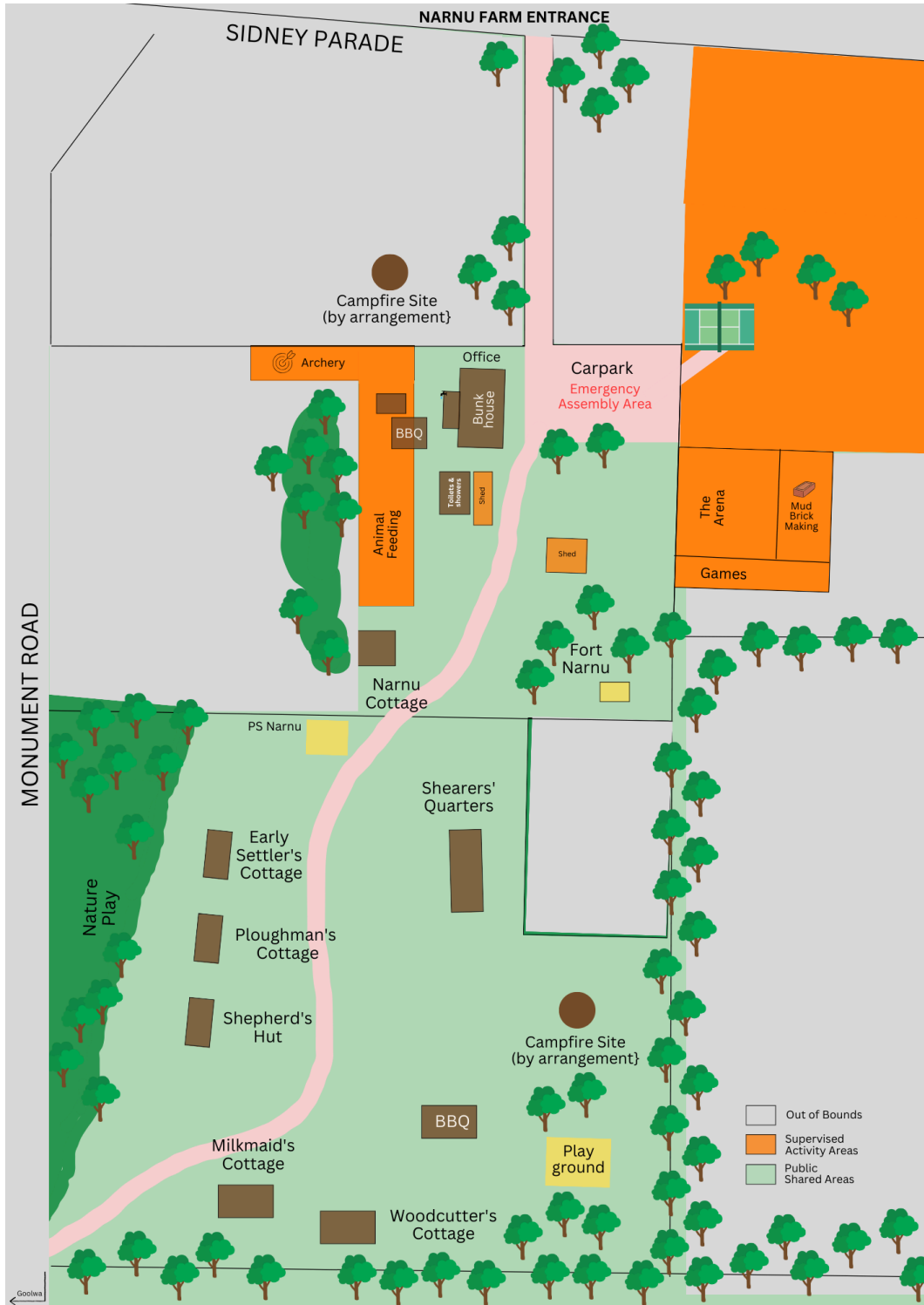
The Narnu (native pine tree) Farm grazing property was established in the early 1870s for Poll Hereford Cattle and Shropshire Sheep. In the late 1880s it had developed into the largest Shropshire Sheep stud in Australia exporting rams throughout Australia. In 1979 the property was developed into a holiday farm which is now known as Narnu Farm. Children and families can share in the nostalgia of the past staying in the restored accommodation and participating in the farm activities.

We would like to acknowledge the Ngarrindjeri people, the traditional owners of the land of where Narnu Farm is located and we pay our respects to their Elders past, present and emerging.

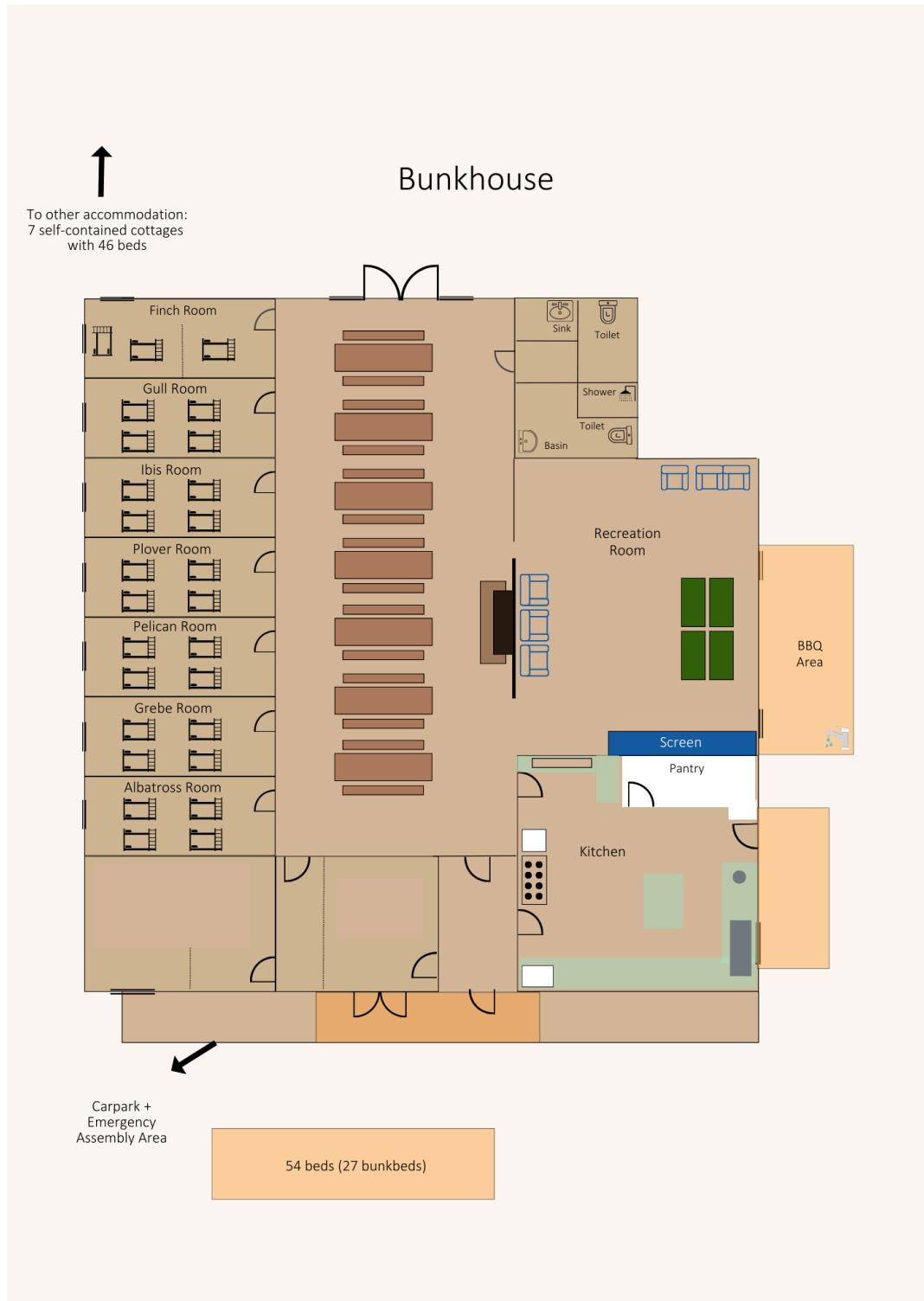
Narnu Farm Location



Main Camp Area



Room Configuration



What to Bring Guide

Narnu Farm sleeps 54 people in the Main Bunkhouse Building. This is divided into:

- 6 rooms each with 4 bunk beds
- Plus an additional split room with 3 bunk beds bringing the total capacity to 54 total.
 - * A new dorm room with 4 bunk beds and a teachers retreat space is coming soon!

Inside the bunkhouse building there is a universally accessible bathroom with 2 x toilets and 1 x shower. External toilet and shower facilities are adjacent to the Bunkhouse with 3 x showers and 2 x toilets in both the male and female facilities.

There is also additional 7 x self contained cottages with a total of 46 beds as follows:

- The 'Shearers Quarters Cottage' sleeps 12 guests
- The 'Early Settlers Cottage' sleeps 7 guests
- The 'Historic Narnu Cottage' sleeps 7 guests
- The 'Ploughman's Cottage' sleeps 5 guests
- The 'Shepherd's Hut' sleeps 5 guests
- The 'Milkmaid's Cottage' sleeps 5 guests
- The 'Woodcutter's Cottage' sleeps 5 guests

ALL LEADERS SHOULD BRING:

- Program
- First Aid Kit and at least one trained person
- A list of campers and emergency contact details
- Bedding / Personal items
- Equipment for your self guided activities
- Device to show movies if required
- Vehicle (remaining on-site, in case of emergency)

ALL CAMPERS SHOULD BRING:

- Personal clothing, towels, hats, bathers, sun screen
 - Sleeping bag, pillows, any other bedding
 - Toiletries and towel
 - Clothing needs including closed toe shoes for activities and a raincoat when required
- Please note: blankets and pillows are NOT available at the campsite

PROVIDED:

- Open space and beautiful tranquil setting
- Paved undercover BBQ area
- Fireplace
- Table tennis (please provide own table tennis balls)
- 80 inch TV and DVD player
- Vinyl covered mattresses

Departure Duties

Remember to check the removal of all belongings from the bunkhouse, showers and cottages.

BUNKHOUSE BEDROOMS

- Pack luggage and remove from rooms
- Place luggage outside under the verandah
- Shake or brush all dirt/sand (etc) off the mattresses
- Pick up rubbish and place in bins
- Sweep dorms and hall
- Check you have not left anything in the rooms including under beds

BATHROOMS

- Remove all personal belongings and empty bins

GROUNDS

- Emu Parade: Pick up rubbish from all areas used and place in rubbish bins

INCIDENTS AND BREAKAGES

- Report any incidents to the office on 1300 326 228
- Complete an incident form, copies are available in the Narnu Farm Welcome Guide in the Bunkhouse
- Report any breakages or equipment failures to the office on 1300 326 228

Emergencies

In an emergency

Police, Fire, Ambulance Dial 000

Poisons Information Centre Dial 13 11 26

The address at Narnu Farm is corner of Monument Road and Sidney Parade, Hindmarsh Island, SA, 5214.

Emergency Contacts

Police Assistance - Non Emergency	131 444
Fire Alarm is monitored by Titan Fire, Security & Electrical Services	8244 8311
CFS Emergency Hotline	1800 362 361
Southern Fleurieu Health Service 24 hour Emergency - Hospital Harbor View Terrace, Victor Harbor	8552 0500
Goolwa Medical Centre 9 Crocker Street, Goolwa	8555 2404
Department of Education Emergency Hotline	1800 000 279
Beyond the Classroom Office	1300 326 228
Luke Talbot-Male (Owner)	0408 388 456
Gary Haworth (General Manager)	0404 882 169
Kevin Colla (Operations Coordinator)	0427 962 563
Leilah Atkin (Program Coordinator)	0437 514 923

Bushfire Action Plan

- Fire Warden: Luke Talbot-Male 0408 388 456
- Deputy Fire Warden: Sarah 0438 060 585

Narnu Farm does not close because of Fire Danger Ratings.

There are no outdoor fires permitted during Total Fire Ban days. You will be informed if this is the case.

The Fire Warden will inform you of any fire dangers during your stay, or if possible before your arrival.

If a nearby fire event occurs while you are on-site you will be informed of the action plan to be implemented, and when to enact the Total Evacuation Plan.

[CFS Incidents and warnings](#) -

<https://www.cfs.sa.gov.au/warnings-restrictions/warnings/incidents-warnings/>

Total Evacuation Plan

If there is a risk of the property coming under threat from a nearby fire, the plan is total evacuation, under the instruction of the Fire Warden.

Evacuation will be by bus or private car off Hindmarsh Island and back to Goolwa.

Under Total Evacuation where time is critical - Take essential items only

- **Fire Emergency Kit and checklist located in the top of the kitchen pantry.**
- **First Aid Kit AND medicines, Safety and Cleaning Kit**
- Don't wait for packing, leave all belongings
- Ensure all camp attendees are present
- Evacuate in vehicles back to Goolwa

For further advice, school teachers can call the Department of Education Emergency Hotline 1800 000 279.

First Aid Policy

Introduction

Beyond the Classroom has a first aid policy to ensure the health and safety of visitors to the campsite. As a general rule, the manager is not at the campsite daily and therefore will not necessarily be available in the event of an accident.

Groups must provide their own trained first aid staff and are responsible for the first aid of campers. While Narnu Farm has first aid kits available, groups are requested to supply their own first aid kit/s.

With the cooperation of those responsible for groups who visit Narnu Farm we look forward to providing a high level of quality care and hospitality. Any medical information shared is treated as highly confidential and with due regard to privacy legislation.

This policy outlines General First Aid Principles and *includes a **First Aid and Medical Checklist***.

General First Aid Principles

1. FIRST AIDERS

- We recommend that at least one adult member of your group is a trained First Aid person
- You will need to identify this/these person/s to your group as the designated person(s) responsible for First Aid
- You should inform Beyond the Classroom of your designated 'First Aid Officer' upon arrival at camp
- At all times, campers should refer any first aid requirements to their designated First Aid Officer and then to the Southern Fleurieu Health Service, Victor Harbor 8552 0500 (24 hour emergency).

2. REFERRAL TO MEDICAL CARE

- If a visitor needs either ambulance transport or referral to medical attention, the responsible first aid officer of the user group must inform the Owner, Luke Talbot-Male (0408 388 456) or General Manager - Gary Haworth (0404 882 169) as soon as possible.
- An incident report form must be completed, handed/mailed/posted to Beyond the Classroom. This document must outline the details of the injured person, how the injury occurred and what action has taken place.
- Visitors requiring medical assistance are advised to attend Southern Fleurieu Health Service in Victor Harbor (24 hour emergency).
- Transport will be arranged either by the user group, i.e. their own vehicle (when it is preferable two people should go i.e. one a driver and one attending patient), or in an emergency situation, an ambulance.

3. MEDICAL REPORT FORMS

- The group coordinator must have medical report forms for each camper, including all adult staff who accompany the group.
- Each individual will have access to their information at all times – it is important all allergies and medications being taken are listed. Medications that need to be taken should be carefully and clearly labelled and left in the care of the designated first aid officer.
- Permission for the group coordinator to release information to Beyond the Classroom that may be vital to their wellbeing. eg. dietary requirements if this camp / function is being catered for.
- Permission for the coordinator to release information to professional medical staff in the event of an emergency.

First Aid and Medical Checklist

BEFORE YOU ARRIVE

- Email medical report forms to Beyond the Classroom
- Notify Beyond the Classroom two weeks prior to camp of any of the following:
 - Any major allergies
 - Any special dietary requests

UPON ARRIVAL

- Identify the designated First Aid officers to the Beyond the Classroom's Program Leader
- Familiarise yourself with Narnu Farm's Emergency Evacuation Plan and Evacuation Point in case of an emergency.

DURING YOUR STAY

- Please keep the Beyond the Classroom's Program Leader informed of any medical first aid incidents
- An incident form is required for accidents and near misses
- Incident forms are located in the Narnu Farm Welcome Guide